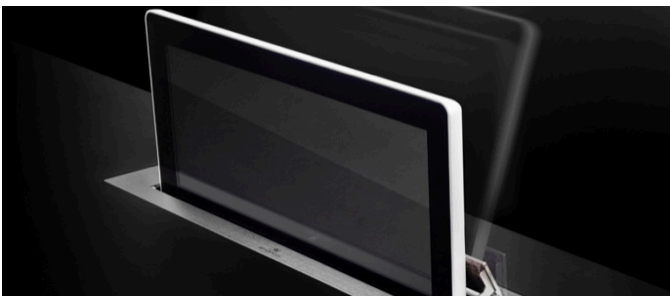
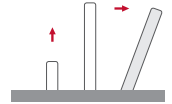


## DynamicX2

HDCP compliant aluminium retractable motorised monitor



### FEATURES

- Vertical motorised monitor with up to 20° inclination
- Patented single engine mechanism for up/down and tilt movements
- Milled aluminium housing with a contemporary design
- Stainless steel customisable cover plate
- Front double sided anti-reflective 2 sides coating 3 mm black edged glass
- Interactive Setup Display (ISD)
- Maintenance free
- HDCP compliant
- Energy saving design, low consumption video controller
- Serial control and remote diagnosis
- Wireless connectivity for setup and control
- Individual monitor addressing
- Auto Mechanical Movement Calibration (AH-AMMC)

### GENERAL

Arthur Holm DynamicX2 is a motorised retractable product range that provides silent, reliable and harmonic movements by the use of a patented solution with one only engine. This automatic system is equipped with a variable speed system to raise, lower and tilt 20° to ensure the best ergonomics, viewing angle and visibility. We have selected the best possible aluminium finishing specifications in the world, providing the maximum technical and visual performance. DynamicX2 have slightly curved edges for a contemporary and longstanding look and the screen is protected with an anti-reflective 2 side coating 3 mm black edged glass. DynamicX2 are available from 15.6" to 23.8", with 2 DVI-HDCP

compliant inputs and equipped with an Interactive Setup Display allowing the control, setup and diagnose of the monitors. Monitors provide RS-422 I/O allowing the remote control of movements, speed, safety settings, brightness, contrast and backlight. The monitors are equipped with an Auto Mechanical Calibration Movement System. The use of the Arthur Holm's ERT will enable the address configuration of all the monitors installed in a table by simply pressing a button. The AHlink Android and iOS app allows getting the monitor's serial number without removing the unit from the table and allows access to the setup and control menu.

#### ARTHUR HOLM

Albiral Display Solutions SL · Fàtima, 25 Sant Hipòlit de Voltregà 08512 Barcelona, Spain · +34 938 502 376 · marketing@arthurholm.com · www.arthurholm.com  
Arthur Holm is a registered brand of Albiral Display Solutions SL. Specifications subject to change without previous notice.

Technology serving Design

**Display**

Size	4K 23.8" TFT Active Matrix, widescreen format. LED backlight
Resolution	3840 (h) x 2160 (v)
Brightness	250 cd/m2
Contrast ratio	1000:1
Pixel	0.13725 (h) x 0.13725 (v) mm
Viewing angle	178° (v) / 178° (h)
Viewing area	527.04 (h) x 296.46 (v) mm
LED backlight lifespan	30,000 hrs
Response time	Tg-g 14 ms
Temperature (operating/storage)	Operating 0°C ~+40°C Storage -20°C ~+60°C

**Materials**

Monitor housing	Anodised Aluminium
Glass	AR 2-side with an anti-reflective coating on the glass surface. Thickness: 3.0 ± 0.3 mm
Cover plate	Stainless steel

**Connectivity**

Input signal	1 x VGA 2 x DisplayPort 2 x HDMI - HDCP compliant
RJ45 CAT6 (with loop)	Addressable RS422 monitor control by AHnet protocol
GPI (SubD9)	Up/Down control
USB	For service

**Control**

RJ45, RS-422 (I/O), AHNet protocol
Addressing
Termination switch
GPI
IR Remote control (monitor adjustments): 1/5

**Movement's Control**

User interface on monitor	(Up/Down) Buttons on cover plate
Remote	RS-422 I/O, GPI

**Electrical**

External power supply	100-240 Vac, 47/63Hz, 12Vdc
Power consumption	55W

**Accessories**

ERT	Ethernet Interface Unit
-----	-------------------------

**Mechanical**

Monitor Dimensions:	
Screen	538 x 304 x 25 mm [21.21" x 11.97" x 0.98"]
Upper cover plate	657.50 x 95 mm x 3 mm [25.89" x 3.73" x 0.12"]
Housing below the table	642.50 x 640 x 80 mm [25.30" x 25.20" x 3.15"]
Weight	26 Kg / 57.32 Lbs
Shipping Dimensions:	
Weight	27 Kg / 59.52 Lbs
Shipping Box	735 x 175 x 705 mm [28.95" x 6.8" x 29.34"]

**OPTIONS**

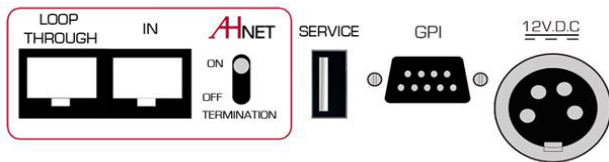
- Laser engraved logo
- UnderCover for veneer
- Underneath installation
- Matte cover plate
- Built-in camera
- DynamicTalkM
- Synchronised Microphones
- Connectors
- Black anodised
- Gold finish
- Bronze finish
- Painted

**CERTIFICATIONS**

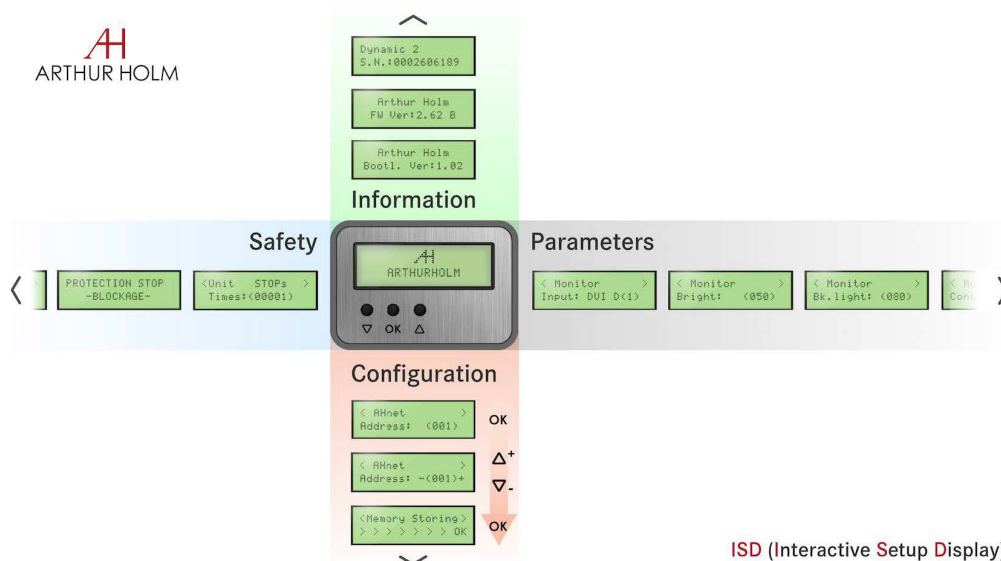
- CE
- FCC
- IECEE

**WARRANTY**

- 5 years limited warranty
- 2 years general warranty



INTERACTIVE SETUP DISPLAY (ISD)

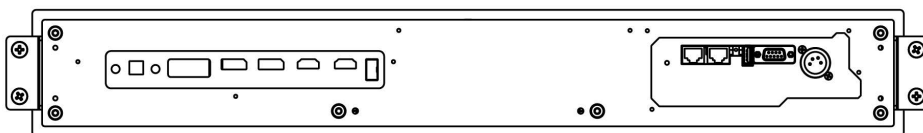
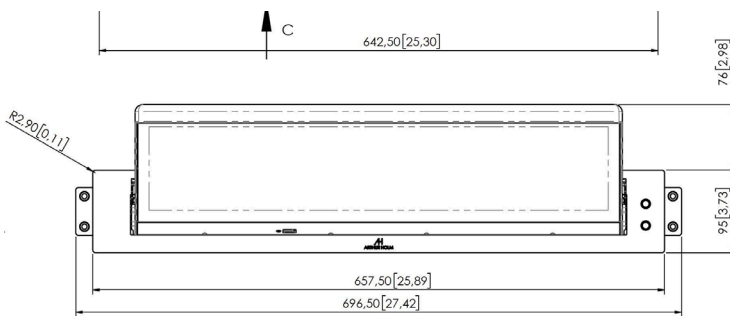
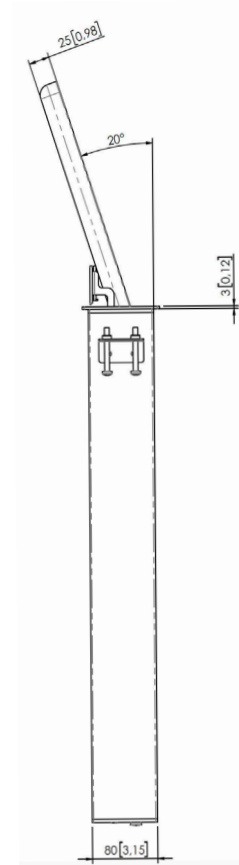
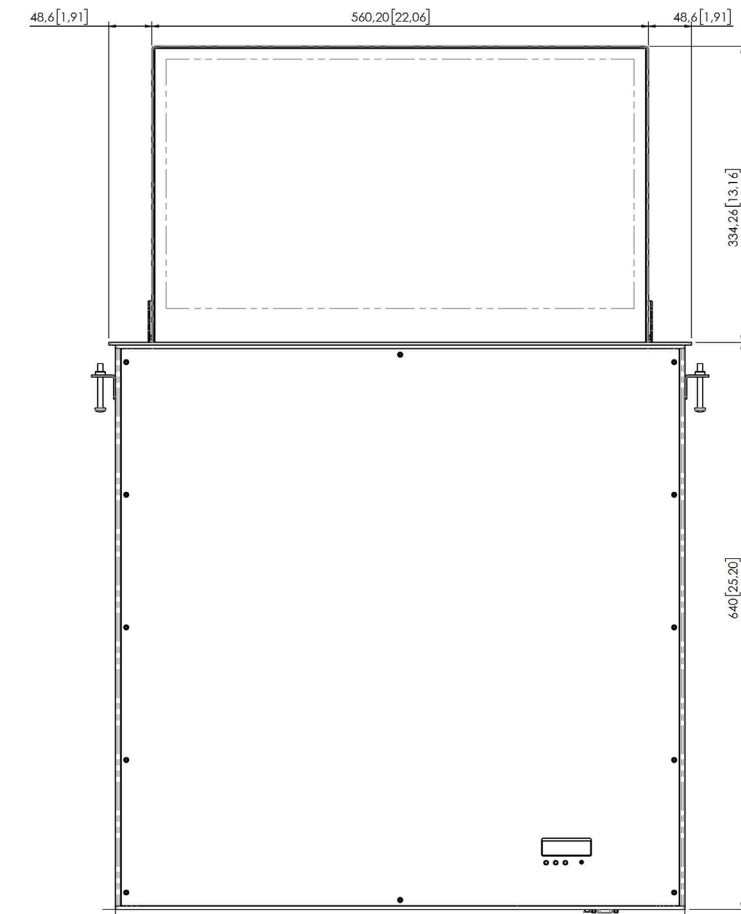


ISD (Interactive Setup Display)

CONSULTANTS, ARCHITECTS AND ENGINEERS SPECIFICATIONS

Vertically retractable motorised 23,8" Full HD professional monitor. The monitor housing shall be made of milled anodised aluminium and the screen shall be protected with anti-reflective 2 side coating black edged 3 mm glass. The monitor shall make the up/down and tilt movements with one only engine. The monitor cover plate shall provide a passive opening system and shall be made of 3 mm brushed stainless steel. The monitor shall have a brightness of 250 cd/m2, a contrast ratio of 1000:1 and a backlight lifespan of 30,000 hours. The monitor shall provide 1 VGA, 2 DisplayPort, 2 HDMI inputs by a licensed HDCP monitor manufacturer.

The monitor shall provide an addressable RS-422 and an easy to read Interactive Setup Display (ISD) to access the safety parameters, the setup of the speed and the control of the brightness, contract and backlight. The monitor shall be able to run an auto-adjustment program to reset the factory setups. The monitor shall provide a USB port for firmware upgrades. The monitor shall be controlled by a wireless Android and iOS app providing information about the monitor's serial number, and providing access to the control and to the setup menu.



ARTHUR HOLM

Albiral Display Solutions SL · Fàtima, 25 Sant Hipòlit de Voltregà 08512 Barcelona, Spain · +34 938 502 376 · marketing@arthurholm.com · www.arthurholm.com  
 Arthur Holm is a registered brand of Albiral Display Solutions SL. Specifications subject to change without previous notice.

Technology serving Design